



# START ENGINEERING JSCo

3, Lokomotiv Str., Sofia 1220, BULGARIA

Тел: (+359 2) 931 0784, (+359 2) 936 0373

Факс: (+359 2) 931 0768

E-mail: [stensof@abv.bg](mailto:stensof@abv.bg) [sofia@starteng.com](mailto:sofia@starteng.com)

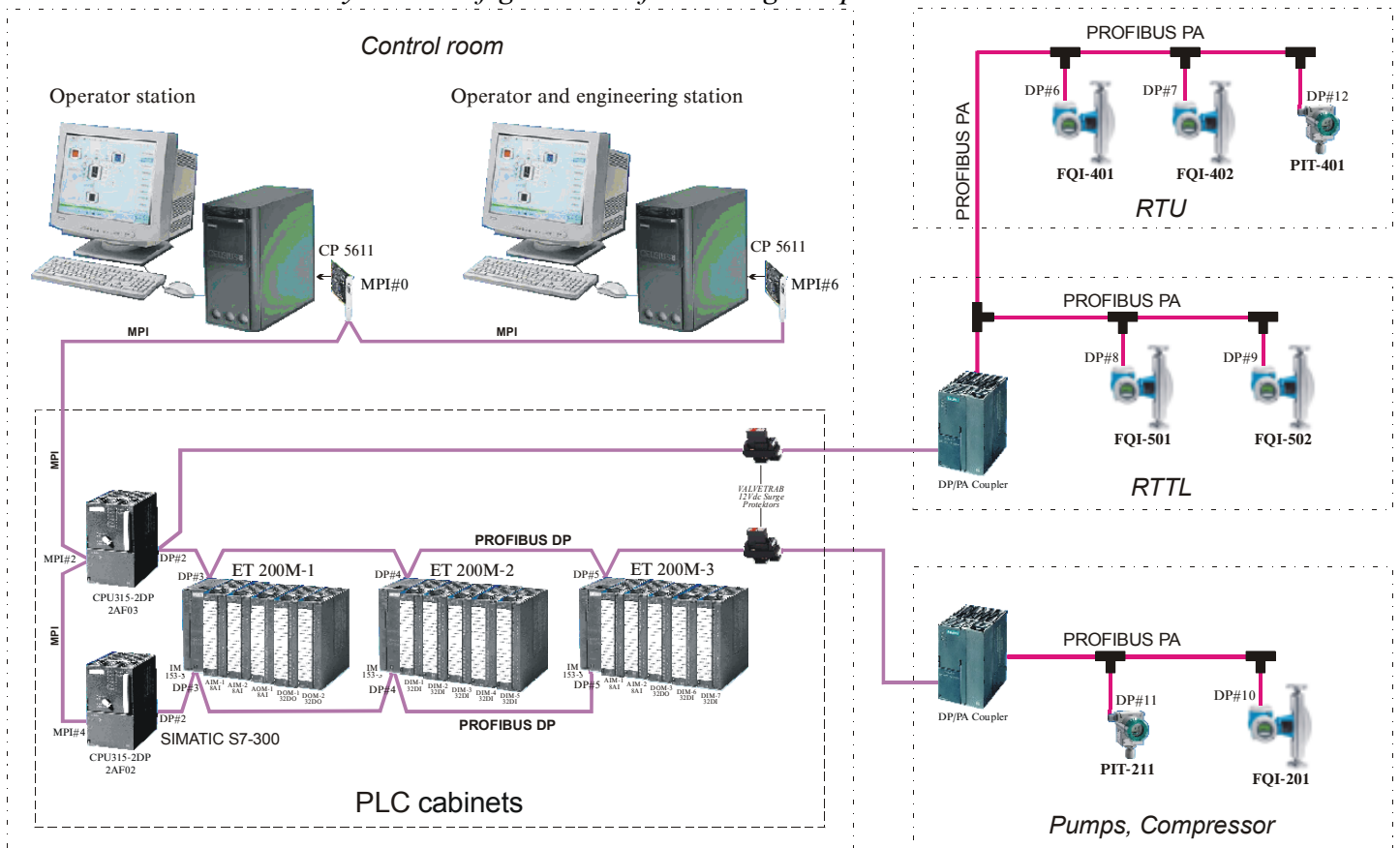
URL: <http://www.starteng.com>

Employer:	SHELL GAS BULGARIA
Project:	Gas filling plant in Benkovski, Plovdiv district
Subproject:	Microprocessor system for vizualization and control
Design:	Upgrade and revision of conventional and microprocessor part in connection with Extension I stage II phase
Main contractor:	Start engineering Co.
Kinds of activities:	Design (hardware and software), installation, startup and commissioning
Performance:	2004

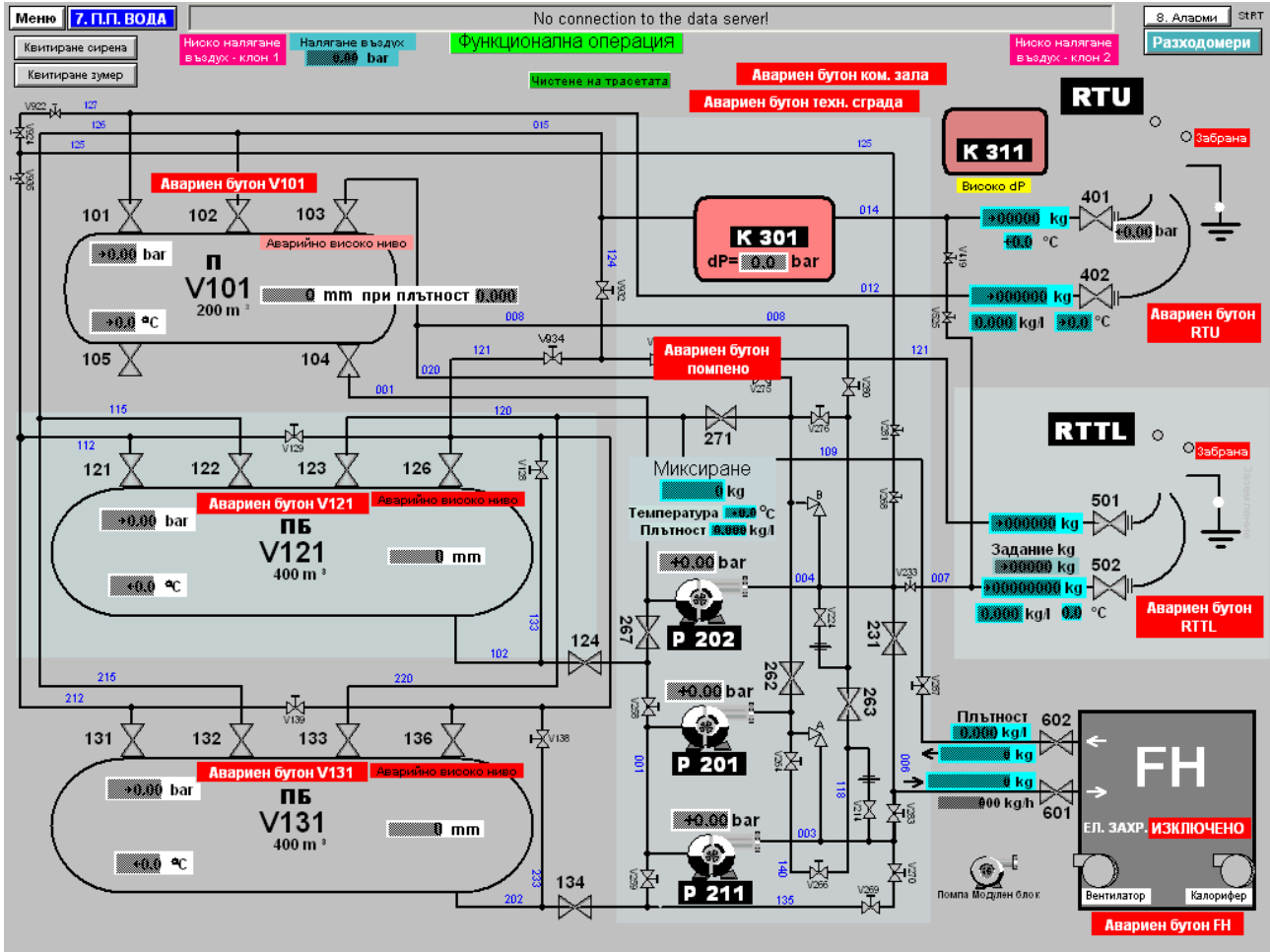
## Short description of the project:

The project was executed by specialists of START ENGINEERING JSCo. BRANCH SOFIA by task assignment of MONTAZHPROEKT OOD. A third LPG pump and pressure transmitter for it are mounted. Five new flow transmitters are mounted: 1 after the propane tank, 2 at Road Tank Loading Facility (liquid and gas phase) and 2 at Railway Tank Unloading Facility (liquid and gas phase). A pressure transmitter is mounted at the Railway Tank Unloading Facility as well. The new transmitters communicate with the control system via PROFIBUS PA. The interface to PROFIBUS DP is made by two DP/PA couplers. The purpose of this additional equipment is to provide more complete and timely information on the material flows in the station, as well as to improve the control and safety of the facilities.

## System configuration after I stage II phase extension



The main view screen now looks like this:



Changes in the other screens for view and printout, as well as in the control windows are made. A new common screen is added - for monitoring the flow meters:

