



START ENGINEERING JSCo.

3, Locomotive Str., 1220 Sofia, Bulgaria

Tel: (+359 2) 931 0784, (+359 2) 936 0373

Fax: (+359 2) 931 0768

E-mail: stensof@abv.bg sofia@starteng.com

URL: <http://www.starteng.com>

Employer:	SHELL GAS BULGARIA
Project:	Gas filling plant in Benkovski, Plovdiv district
Subproject:	Microprocessor system for vizualization and control
Design:	For performance of conventional and microprocessor part
Main contractor:	“Start engineering” JSCo.
Kinds of activities:	Design (hardware and software), installation and commissioning
Performance:	Finished in 1999

Short description of the project:

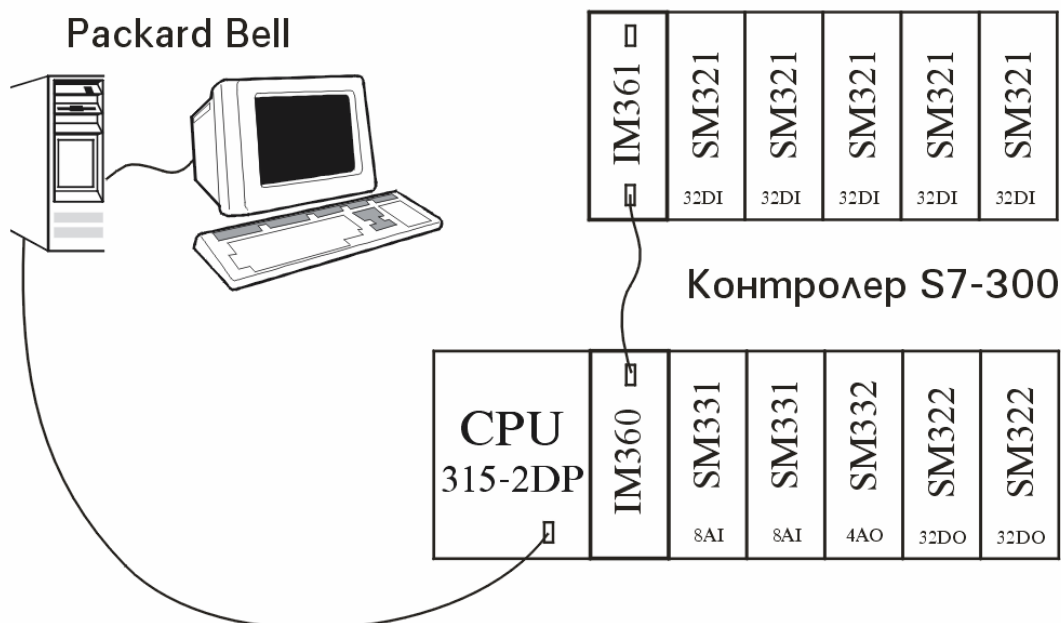
The project was performed by specialists of “Start engineering”, JSCo. — Branch Sofia by preliminary design of Kvaerner Process (Provence) SNC and specific requirements of the employer.

The microprocessor control system consists of programmable logic controller (PLC) SIMATIC S7-300 of SIEMENS and operator’s station (OS) based on a personal computer (PC) **Packard Bell**. The connection between them is digital — serial interface by RS485 standard with conversion in the PC by MPI card.

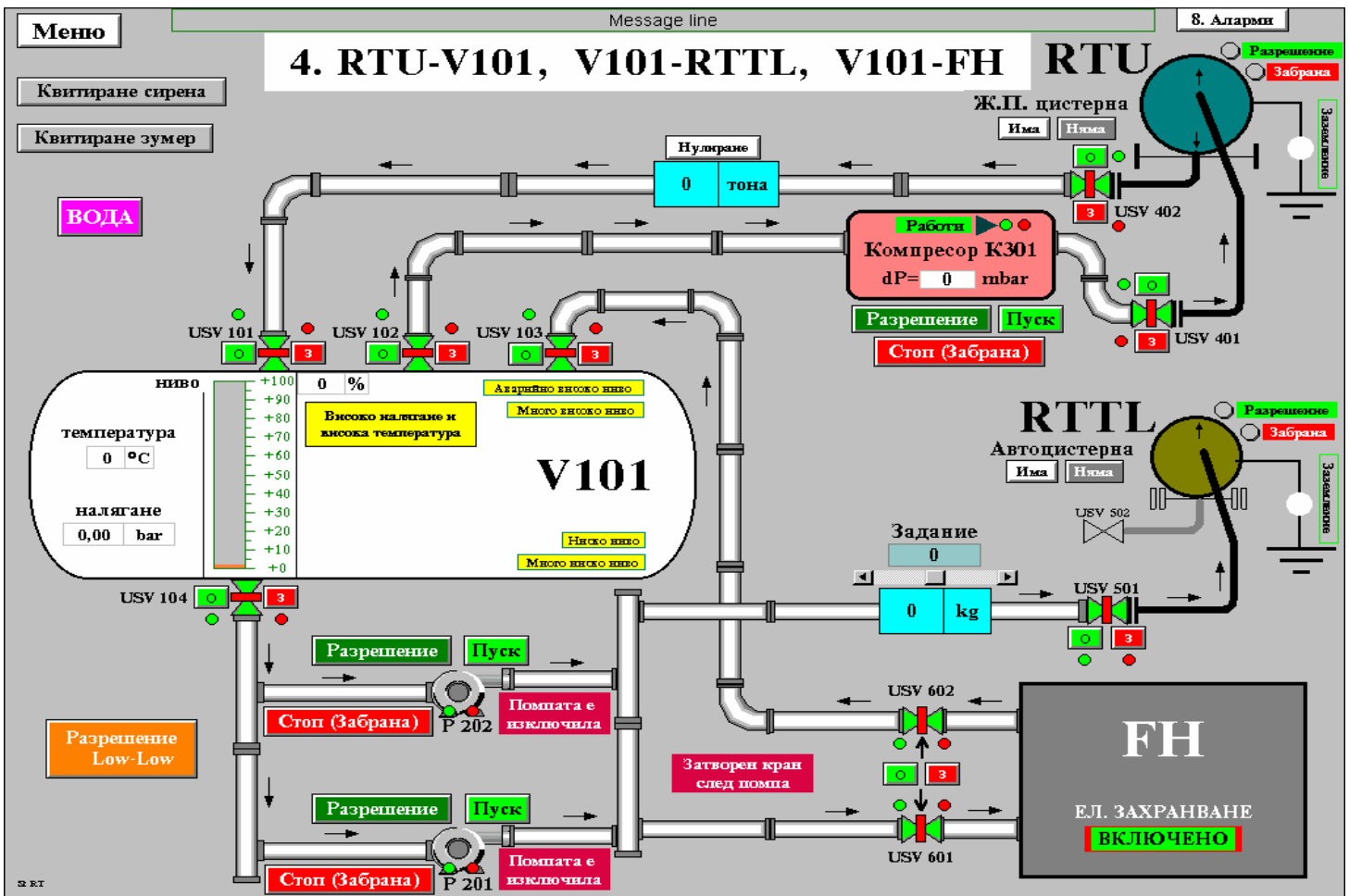
The PLC is supplied by 24V DC from redundant rectifier 40A, and the PC — from 220V, 50Hz. The 220V, 50Hz supply of the rectifier and the PC is from UPS of Merlin Gerin.

The application software for the controller is realized by means of the programming language STEP 7 of SIEMENS, and the application software for the operator’s station — by means of the vizualization software WinCC of SIEMENS.

System configuration



Main operating screen



Fire fighting system screen

